

'SPHÈRES 2012'

VOLUSPA JARPA, LILIANA PORTER, MOHAMED NAMOU, EKO NUGROHO, OSCAR MUÑOZ, ROB PRUITT, ELIN HANSDÓTTIR, YQSHUA OKON, JORGE PEDRO NÚÑEZ, MEGUMI MATSUBARA, STERLING RUBY, SLINKO, JULIA COTTIN, YANN GERSTBERGER, NICOLAS MOULIN, ABDULNASSER GHAREM, DARREN BADER, AMY CROFT, SALWA ALERYANI + SASHA ZUWOLINSKY, SARAH BRAMAN, CORY ARCANGEL, KADER ATTIA, LORIS CECCHINI, NIKHIL CHOPRA, MESCHAC GABA, CARLOS GARAICOA, KENDELL GEERS, ANTONY GORMLEY, MONA HATOUM, ZHANNA KADYROVA, PASCALE MARTHINE TAYOU

20/10/2012 — 26/05/2013

[LES MOULINS](#)[GALLERY](#)[VIEW MAP](#)[PRESS RELEASE](#)[PRESS AREA](#)[CONTACTS](#)[SHARE](#)

SPHÈRES 2012 - Carlos Garaicoa, *'Abstractions (It happened in another place)'*; 1997-2012, Digital print on paper, Dimensions variable (100 x 80 cm each), Courtesy GALLERIA CONTINUA, San Gimignano, Beijing, Le Moulin



SPHÈRES 2012 - Carlos Garaicoa, *'Abstractions (It happened in another place)'*; 1997-2012, Digital print on paper, Dimensions variable (100 x 80 cm each), Courtesy GALLERIA CONTINUA, San Gimignano, Beijing, Le Moulin



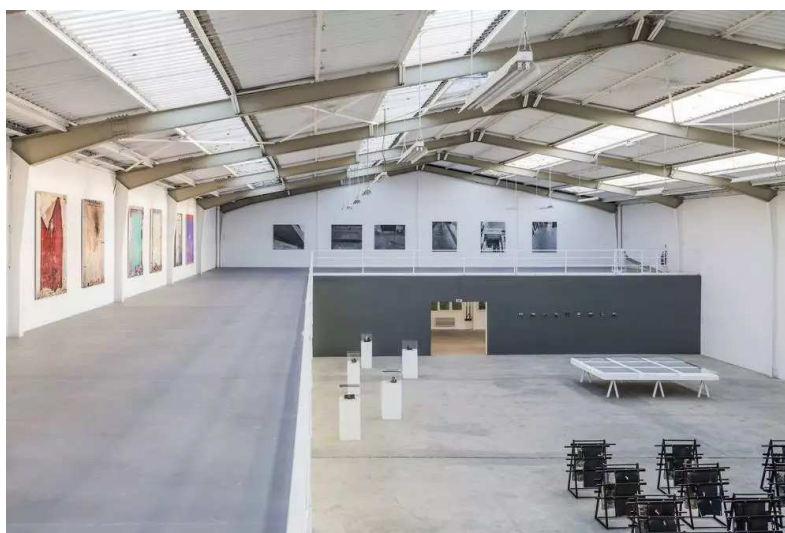
SPHÈRES 2012 - Carlos Garaicoa, *'Abstractions (It happened in another place)'*; 1997-2012, Digital print on paper, Dimensions variable (100 x 80 cm each), Courtesy GALLERIA CONTINUA, San Gimignano, Beijing, Le Moulin



SPHÈRES 2012 - Carlos Garaicoa, *'Abstractions (It happened in another place)'*; 1997-2012, Digital print on paper, Dimensions variable (100 x 80 cm each), Courtesy GALLERIA CONTINUA, San Gimignano, Beijing, Le Moulin



SPHÈRES 2012 - Carlos Garaicoa, Exhibition view *'L'Optimiste'*, 2012, GALLERIA CONTINUA, Le Moulin



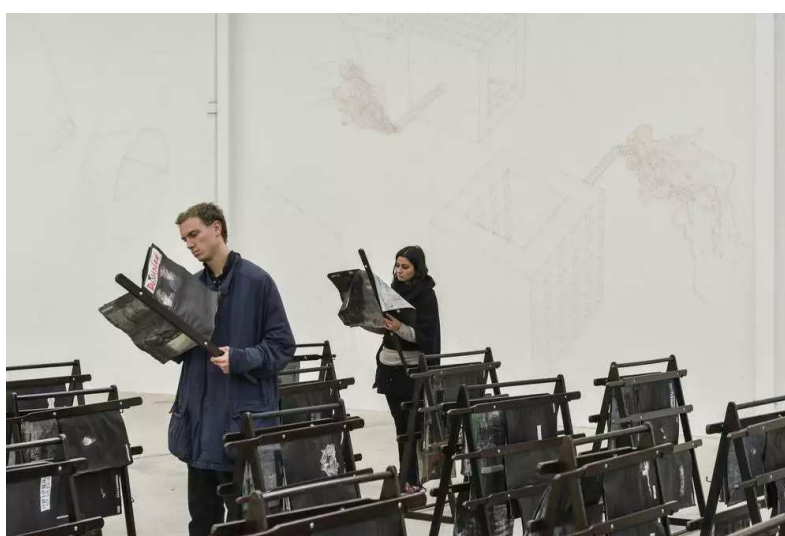
SPHÈRES 2012 - Carlos Garaicoa, Exhibition view *'L'Optimiste'*, 2012, GALLERIA CONTINUA, Le Moulin



SPHÈRES 2012 - Carlos Garaicoa, *'El Cuarto Oscuro / The Dark Room'*, 2010, Installation. Newspapers, wood, ink, metal, Dimensions variable, Courtesy GALLERIA CONTINUA, San Gimignano, Beijing, Le Moulin



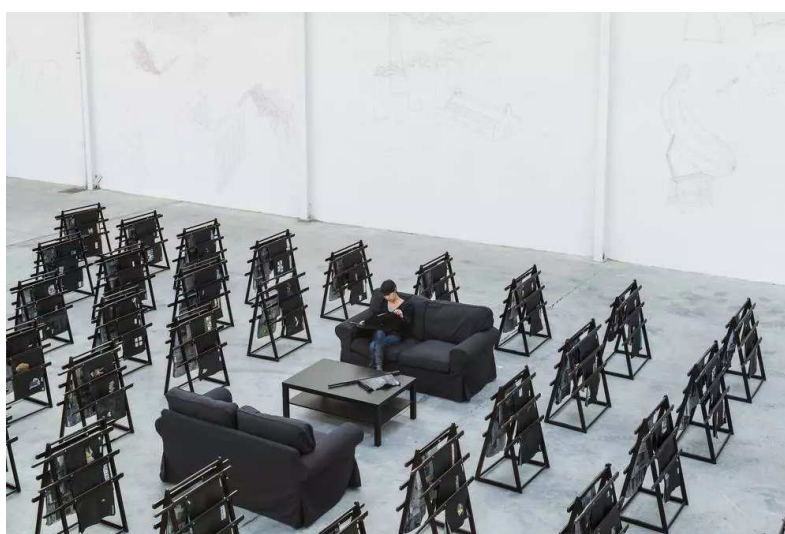
SPHÈRES 2012 - Carlos Garaicoa, *'El Cuarto Oscuro / The Dark Room'*, 2010, Installation. Newspapers, wood, ink, metal, Dimensions variable, Courtesy GALLERIA CONTINUA, San Gimignano, Beijing, Le Moulin



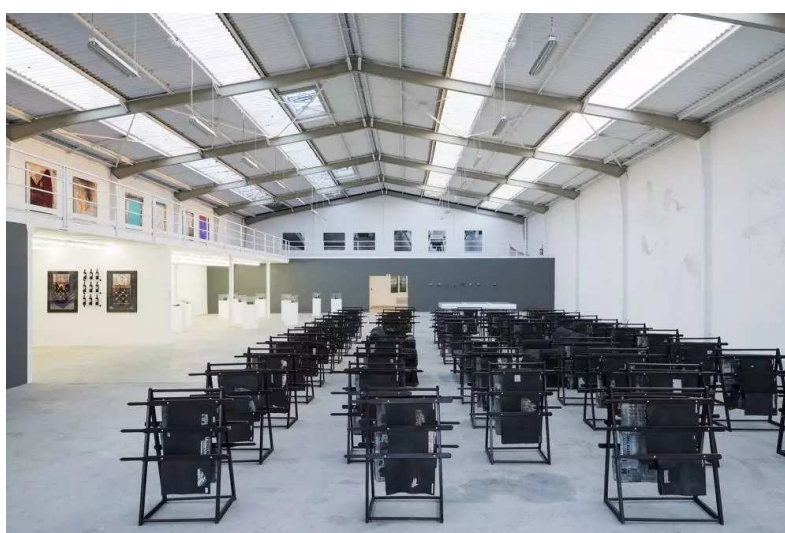
SPHÈRES 2012 - Carlos Garaicoa, *'El Cuarto Oscuro / The Dark Room'*, 2010, Installation. Newspapers, wood, ink, metal, Dimensions variable, Courtesy GALLERIA CONTINUA, San Gimignano, Beijing, Le Moulin



SPHÈRES 2012 - Carlos Garaicoa, *'El Cuarto Oscuro / The Dark Room'*, 2010, Installation. Newspapers, wood, ink, metal, Dimensions variable, Courtesy GALLERIA CONTINUA, San Gimignano, Beijing, Le Moulin



SPHÈRES 2012 - Carlos Garaicoa, *'El Cuarto Oscuro / The Dark Room'*, 2010, Installation. Newspapers, wood, ink, metal, Dimensions variable, Courtesy GALLERIA CONTINUA, San Gimignano, Beijing, Le Moulin



SPHÈRES 2012 - Carlos Garaicoa, *Exhibition view 'L'Optimiste'*, 2012, GALLERIA CONTINUA, Le Moulin



SPHÈRES 2012 - Carlos Garaicoa, *Exhibition view 'L'Optimisté'*, 2012, GALLERIA CONTINUA, Le Moulin



SPHÈRES 2012 - Carlos Garaicoa, *'Foto-topografía / Photo-topography (Calzada de Monte y Matadero, Havana)'*, 2012, Photograph transferred to polyspan, 80 x 100 cm, Courtesy GALLERIA CONTINUA, San Gimignano, Beijing, Le Moulin



SPHÈRES 2012 - Carlos Garaicoa, *'Foto-topografía / Photo-topography (Calzada de Monte y Matadero, Havana)'*, 2012, Photograph transferred to polyspan, 80 x 100 cm, Courtesy GALLERIA CONTINUA, San Gimignano, Beijing, Le Moulin



SPHÈRES 2012 - Carlos Garaicoa, Exhibition view '*L'Optimiste*', 2012, GALLERIA CONTINUA, Le Moulin



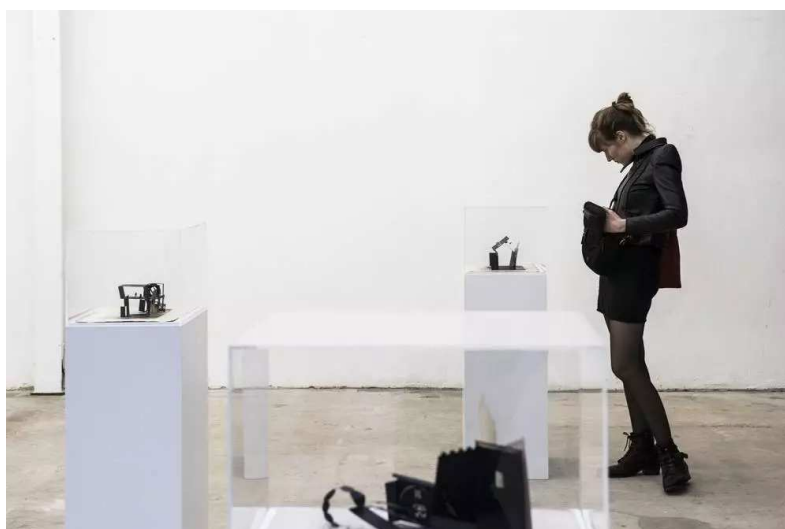
SPHÈRES 2012 - Carlos Garaicoa, Exhibition view '*L'Optimiste*', 2012, GALLERIA CONTINUA, Le Moulin



SPHÈRES 2012 - Carlos Garaicoa, 'The Old and the New', 2010, Installation. 12 French XIX Century engravings, hand cut cardboard, Dimensions variable, Courtesy GALLERIA CONTINUA, San Gimignano, Beijing, Le Moulin.



SPHÈRES 2012 - Carlos Garaicoa, *'The Old and the New'*, 2010, Installation. 12 French XIX Century engravings, hand cut cardboard, Dimensions variable, Courtesy GALLERIA CONTINUA, San Gimignano, Beijing, Le Moulin



SPHÈRES 2012 - Carlos Garaicoa, *'The Old and the New'*, 2010, Installation. 12 French XIX Century engravings, hand cut cardboard, Dimensions variable, Courtesy GALLERIA CONTINUA, San Gimignano, Beijing, Le Moulin



SPHÈRES 2012 - Carlos Garaicoa, *'Mis obsesiones privadas , My private obsessions'*, 2009 - *'Mis obsesiones publicas / My public obsessions'* 2009, Installation. Glass, metal, video transferred to DVD, projector, 160 x 80 x 80 cm each, Courtesy GALLERIA CONTINUA, San Gimignano, Beijing, Le Moulin



SPHÈRES 2012 - CARLOS GARAICOA, *The Old and the New*- 'Mis obsesiones privadas / My private obsessions, 2009 - Mis obsesiones publicas - My public obsessions' 2009, Installation. Glass, metal, video transferred to DVD, projector, 160 x 80 x 80 cm each, Courtesy GALLERIA CONTINUA, San Gimignano, Beijing, Le Moulin



SPHÈRES 2012 - Carlos Garaicoa, *Mis obsesiones privadas / My private obsessions, 2009 - Mis obsesiones publicas / My public obsessions*' 2009, Installation. Glass, metal, video transferred to DVD, projector, 160 x 80 x 80 cm each, Courtesy GALLERIA CONTINUA, San Gimignano, Beijing, Le Moulin



SPHÈRES 2012 - Carlos Garaicoa, *Mis obsesiones privadas / My private obsessions, 2009 - Mis obsesiones publicas / My public obsessions*' 2009, Installation. Glass, metal, video transferred to DVD, projector, 160 x 80 x 80 cm each, Courtesy GALLERIA CONTINUA, San Gimignano, Beijing, Le Moulin



SPHÈRES 2012 - Carlos Garaicoa, Exhibition view '*L'Optimiste*', 2012, GALLERIA CONTINUA, Le Moulin



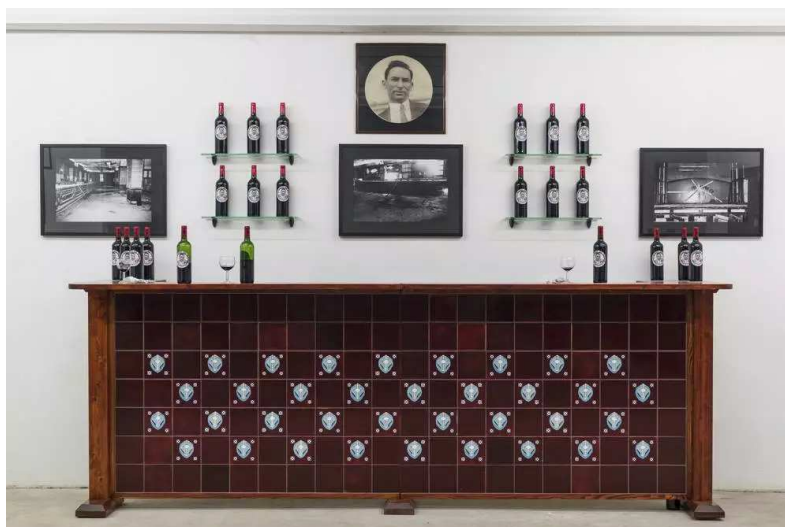
SPHÈRES 2012 - Carlos Garaicoa, Exhibition view '*L'Optimiste*', 2012, GALLERIA CONTINUA, Le Moulin



SPHÈRES 2012 - Carlos Garaicoa, '*Inmejorables / The Ultimate*', 2012, Diptych. Ilfordjet print mounted and laminated in plexiglas and aluminium, ceramic, ink, 169 x 151 x 3 cm (ceramic), 130 x 175 x 4 cm, 149 x 175 x 4 cm (photograph split in 2 pannels); and: Carlos Garaicoa, '*Provocación / Provocation*', 2012, Diptych. Ilfordjet print mounted and laminated in plexiglas and aluminium, ceramic, ink, 119 x 170 x 3 cm (ceramic), 146 x 224 x 4 cm, 133 x 224 x 4 cm (photograph split in 2 pannels), Courtesy GALLERIA CONTINUA, San Gimignano, Beijing, Le Moulin



SPHÈRES 2012 - Carlos Garaicoa, *'Sloppy Joe's Bar dream'*; 1995, Installation. Wood and tile bar painted by hand, wine, photographs, juke box, music, glasses and shelves, Dimensions variable, Courtesy GALLERIA CONTINUA, San Gimignano, Beijing, Le Moulin



SPHÈRES 2012 - Carlos Garaicoa, *'Sloppy Joe's Bar dream'*; 1995, Installation. Wood and tile bar painted by hand, wine, photographs, juke box, music, glasses and shelves, Dimensions variable, Courtesy GALLERIA CONTINUA, San Gimignano, Beijing, Le Moulin



SPHÈRES 2012 - Carlos Garaicoa, *'Sloppy Joe's Bar dream'*; 1995, Installation. Wood and tile bar painted by hand, wine, photographs, juke box, music, glasses and shelves, Dimensions variable, Courtesy GALLERIA CONTINUA, San Gimignano, Beijing, Le Moulin



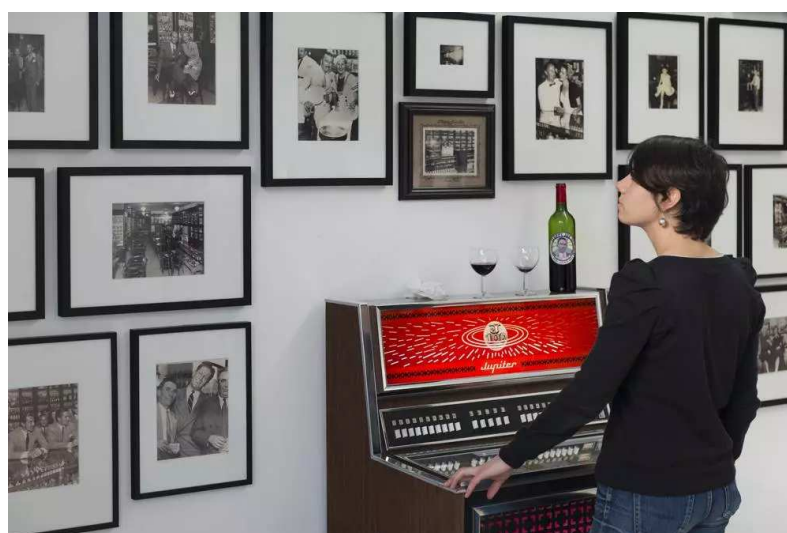
SPHÈRES 2012 - Carlos Garaicoa, *'Sloppy Joe's Bar dream'*; 1995, Installation. Wood and tile bar painted by hand, wine, photographs, juke box, music, glasses and shelves, Dimensions variable, Courtesy GALLERIA CONTINUA, San Gimignano, Beijing, Le Moulin



SPHÈRES 2012 - Carlos Garaicoa, *'Sloppy Joe's Bar dream'* 1995, Installation. Wood and tile bar painted by hand, wine, photographs, juke box, music, glasses and shelves, Dimensions variable, Courtesy GALLERIA CONTINUA, San Gimignano, Beijing, Le Moulin



SPHÈRES 2012 - Carlos Garaicoa, *'Sloppy Joe's Bar dream'*, 1995, Installation. Wood and tile bar painted by hand, wine, photographs, juke box, music, glasses and shelves, Dimensions variable, Courtesy GALLERIA CONTINUA, San Gimignano, Beijing, Le Moulin



SPHÈRES 2012 - Carlos Garaicoa, *'Sloppy Joe's Bar dream'*, 1995, Installation. Wood and tile bar painted by hand, wine, photographs, juke box, music, glasses and shelves, Dimensions variable, Courtesy GALLERIA CONTINUA, San Gimignano, Beijing, Le Moulin



SPHÈRES 2012 - Carlos Garaicoa, *'Sloppy Joe's Bar dream'*; 1995, Installation. Wood and tile bar painted by hand, wine, photographs, juke box, music, glasses and shelves, Dimensions variable, Courtesy GALLERIA CONTINUA, San Gimignano, Beijing, Le Moulin



SPHÈRES 2012 - Carlos Garaicoa, *'Sloppy Joe's Bar dream'*; 1995, Installation. Wood and tile bar painted by hand, wine, photographs, juke box, music, glasses and shelves, Dimensions variable, Courtesy GALLERIA CONTINUA, San Gimignano, Beijing, Le Moulin



SPHÈRES 2012 - Carlos Garaicoa, *'Sloppy Joe's Bar dream'*; 1995, Installation. Wood and tile bar painted by hand, wine, photographs, juke box, music, glasses and shelves, Dimensions variable, Courtesy GALLERIA CONTINUA, San Gimignano, Beijing, Le Moulin



SPHÈRES 2012 - Carlos Garaicoa, '*Oficios y Santa Clara*', 2012, '*Calzada del Cerro y Castillo*', 2012, '*Vieja Linda, La Habana*', 2012, '*Avenida del Puerto y Luz*', 2012, Pigment print on gelation coated bone, 12 x 15 cm each, Courtesy GALLERIA CONTINUA, San Gimignano, Beijing, Le Moulin



SPHÈRES 2012 - Kader Attia, '*Tawaaf*', 2008, Concrete blocks, Dimensions variable, Courtesy GALLERIA CONTINUA, San Gimignano, Beijing, Le Moulin



SPHÈRES 2012 - Kader Attia, '*Tawaaf*', 2008, Concrete blocks, Dimensions variable, Courtesy GALLERIA CONTINUA, San Gimignano, Beijing, Le Moulin



SPHÈRES 2012 - Kader Attia, *'Mimetism'*, 2011, Lead, Dimensions variable (lead sheet: 23 x 23 cm),
Courtesy GALLERIA CONTINUA, San Gimignano, Beijing, Le Moulin



SPHÈRES 2012 - Kader Attia, *'Mimetism'*, 2011, Lead, Dimensions variable (lead sheet: 23 x 23 cm),
Courtesy GALLERIA CONTINUA, San Gimignano, Beijing, Le Moulin



SPHÈRES 2012 - Kader Attia, *'Mimetism'*, 2011, Lead, Dimensions variable (lead sheet: 23 x 23 cm),
Courtesy GALLERIA CONTINUA, San Gimignano, Beijing, Le Moulin



SPHÈRES 2012 - Kader Attia, *'Mimetism'*, 2011, Lead, Dimensions variable (lead sheet: 23 x 23 cm),
Courtesy GALLERIA CONTINUA, San Gimignano, Beijing, Le Moulin



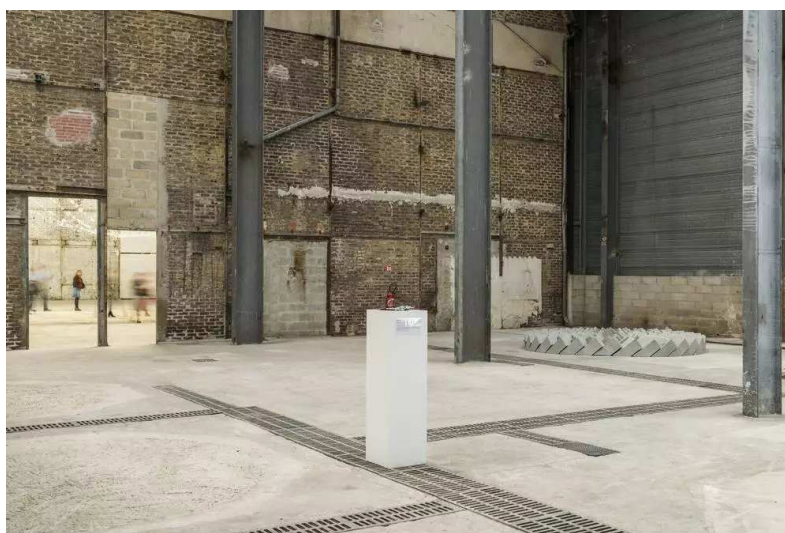
SPHÈRES 2012 - Kader Attia, *'Mimetism'*, 2011, Lead, Dimensions variable (lead sheet: 23 x 23 cm),
Courtesy GALLERIA CONTINUA, San Gimignano, Beijing, Le Moulin



SPHÈRES 2012 - Kader Attia, *'Mimetism'*, 2011, Lead, Dimensions variable (lead sheet: 23 x 23 cm),
Courtesy GALLERIA CONTINUA, San Gimignano, Beijing, Le Moulin



SPHÈRES 2012 - Kader Attia, *'Mimetism'*, 2011, Lead, Dimensions variable (lead sheet: 23 x 23 cm),
Courtesy GALLERIA CONTINUA, San Gimignano, Beijing, Le Moulin



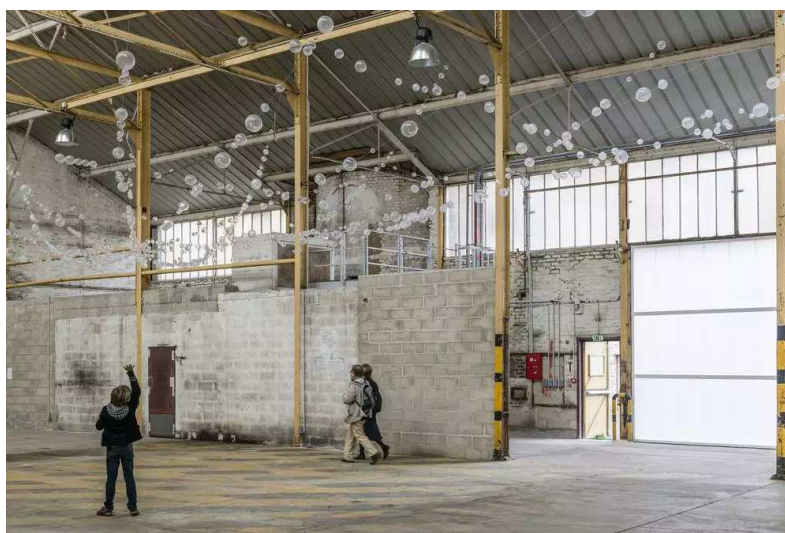
SPHÈRES 2012 - Kader Attia, *'Tawaaf'*, 2008, Concrete blocks, Dimensions variable; and: Kader Attia -
'Mimetism', 2011, Lead, Dimensions variable (lead sheet: 23 x 23 cm), Courtesy GALLERIA CONTINUA, San
Gimignano, Beijing, Le Moulin



SPHÈRES 2012 - Kader Attia, *'Inspiration / Conversation'*, 2010, Video Installation, diptych, 13'55" loop each, Courtesy GALLERIA CONTINUA, San Gimignano, Beijing, Le Moulin



SPHÈRES 2012 - Kader Attia, *'Inspiration / Conversation'*, 2010, Video Installation, diptych, 13'55" loop each, Courtesy GALLERIA CONTINUA, San Gimignano, Beijing, Le Moulin



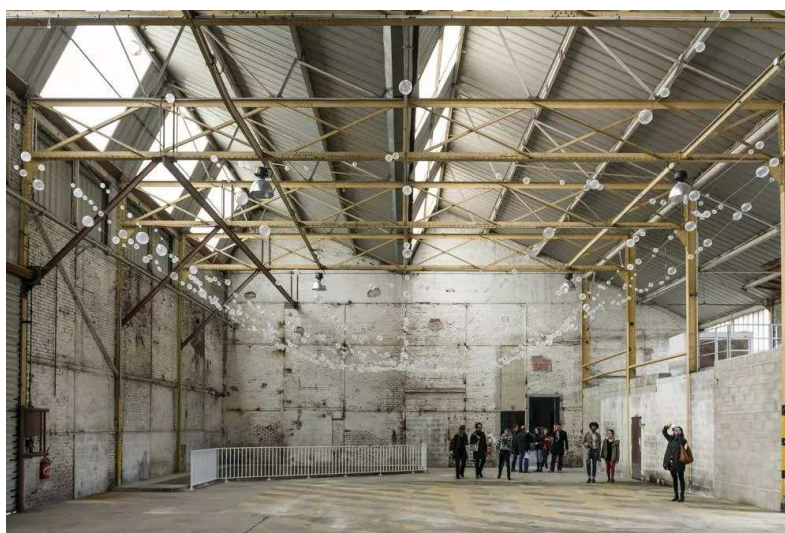
SPHÈRES 2012 - Mona Hatoum, *'Web'*, 2006-2012, Crystal balls and metal wire, H 210 x 3018 x 1487 cm, Courtesy GALLERIA CONTINUA, San Gimignano, Beijing, Le Moulin



SPHÈRES 2012 - Mona Hatoum, *'Web'*, 2006-2012, Crystal balls and metal wire, H 210 x 3018 x 1487 cm, Courtesy GALLERIA CONTINUA, San Gimignano, Beijing, Le Moulin



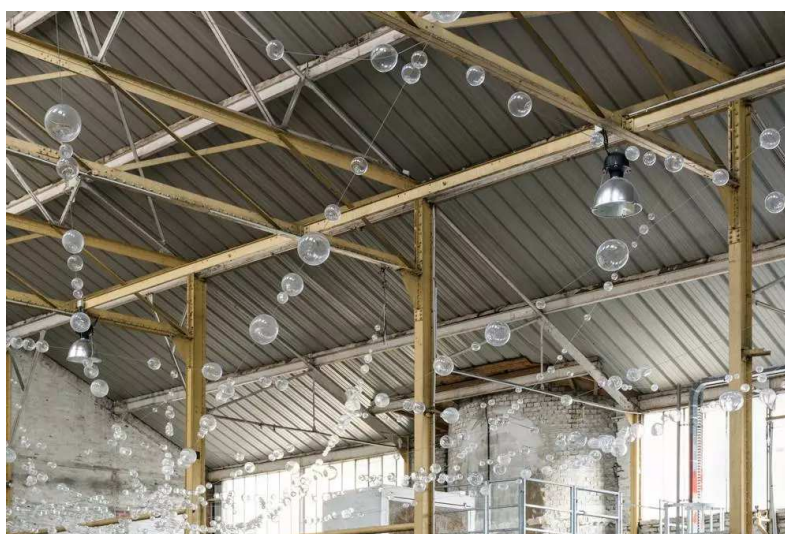
SPHÈRES 2012 - Mona Hatoum, *'Web'*, 2006-2012, Crystal balls and metal wire, H 210 x 3018 x 1487 cm, Courtesy GALLERIA CONTINUA, San Gimignano, Beijing, Le Moulin



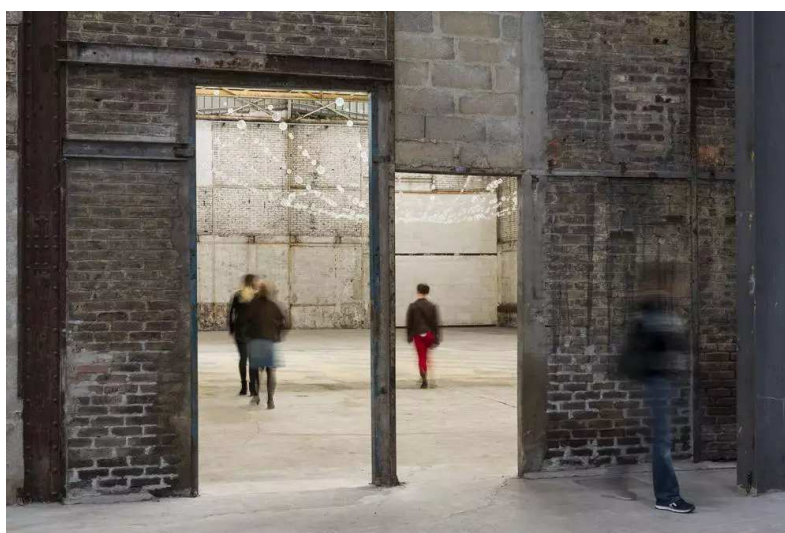
SPHÈRES 2012 - Mona Hatoum, *'Web'*, 2006-2012, Crystal balls and metal wire, H 210 x 3018 x 1487 cm, Courtesy GALLERIA CONTINUA, San Gimignano, Beijing, Le Moulin



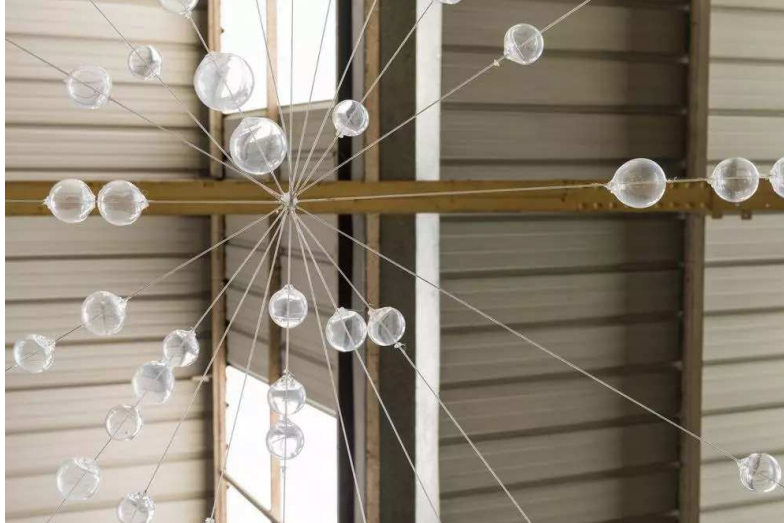
SPHÈRES 2012 - Mona Hatoum, 'Web', 2006-2012, Crystal balls and metal wire, H 210 x 3018 x 1487 cm, Courtesy GALLERIA CONTINUA, San Gimignano, Beijing, Le Moulin



SPHÈRES 2012 - Mona Hatoum, 'Web', 2006-2012, Crystal balls and metal wire, H 210 x 3018 x 1487 cm, Courtesy GALLERIA CONTINUA, San Gimignano, Beijing, Le Moulin



SPHÈRES 2012 - Mona Hatoum, 'Web', 2006-2012, Crystal balls and metal wire, H 210 x 3018 x 1487 cm, Courtesy GALLERIA CONTINUA, San Gimignano, Beijing, Le Moulin



SPHÈRES 2012 - Mona Hatoum, *'Web'*, 2006-2012, Crystal balls and metal wire, H 210 x 3018 x 1487 cm, Courtesy GALLERIA CONTINUA, San Gimignano, Beijing, Le Moulin



SPHÈRES 2012 - Cory Arcangel, *'Photoshop Gradient'*, 2008, C-print, 287 x 190,5 cm, Exhibition View, Spheres 2012, at GALLERIA CONTINUA, Le Moulin, Courtesy Depart Foundation



SPHÈRES 2012 - Pascale Marthine Tayou, '4 Seasons', 2012, Wall drawing, 3,35 x 42,60 cm, Courtesy GALLERIA CONTINUA, San Gimignano, Beijing, Le Moulin



SPHÈRES 2012 - Pascale Marthine Tayou, '4 Seasons', 2012, Wall drawing, 3,35 x 42,60 cm, Courtesy GALLERIA CONTINUA, San Gimignano, Beijing, Le Moulin



SPHÈRES 2012 - Pascale Marthine Tayou, 'La Roue des Insultes', 2010, Wood, adhesive, mechanism, 30 x 200 cm, Courtesy GALLERIA CONTINUA, San Gimignano, Beijing, Le Moulin



SPHÈRES 2012 - Zhanna Kadyrova, *'Invisible Forms'*, 2012, Two lamps, wooden beams, cement, Dimensions variable, Exhibition View, Spheres 2012, at GALLERIA CONTINUA, Le Moulin; and: Zhanna Kadyrova, *'Invisible Forms'*, 2012, Light switcher, cement, Dimensions variable, Exhibition View, Spheres 2012, at GALLERIA CONTINUA, Le Moulin, Courtesy Zhanna Kadyrova and Izolyatsia. Platform for Cultural Initiatives



SPHÈRES 2012 - Zhanna Kadyrova, *'Invisible Forms'*, 2012, Electrical socket, cement, Dimensions variable, Exhibition View, Spheres 2012, at GALLERIA CONTINUA, Le Moulin, Courtesy Zhanna Kadyrova and Izolyatsia. Platform for Cultural Initiatives



SPHÈRES 2012 - Zhanna Kadyrova, *'Invisible Forms'*, 2012, Security camera, wooden beams, cement, Dimensions variable, Exhibition View, Spheres 2012, at GALLERIA CONTINUA, Le Moulin, Courtesy Zhanna Kadyrova and Izolyatsia. Platform for Cultural Initiatives



SPHÈRES 2012 - Zhanna Kadyrova, *'Invisible Forms'*; 2012, Security camera, wooden beams, cement, Dimensions variable, Exhibition View, Spheres 2012, at GALLERIA CONTINUA, Le Moulin, Courtesy Zhanna Kadyrova and Izolyatsia. Platform for Cultural Initiatives



SPHÈRES 2012 - Salwa Aleryani + Sasha Zuwolinsky, *'A Hair Perhaps Divides the False and True'*; 2012, Video, 5'29", Exhibition View, Spheres 2012, at GALLERIA CONTINUA, Le Moulin, Courtesy of the artists, Salwa Aleryani + Sasha Zuwolinsky in residence in Dar al-Ma_ḥmūn, Marrakech, in 2012; and: Zhanna Kadyrova, *'Invisible Forms'*; 2012, Two lamps, wooden beams, cement, Dimensions variable, Exhibition View, Spheres 2012, at GALLERIA CONTINUA, Le Moulin, Courtesy Zhanna Kadyrova and Izolyatsia. Platform for Cultural Initiatives



SPHÈRES 2012 - Zhanna Kadyrova, *'Invisible Forms'*; 2012, Video camera, tripod, wooden beams, cement, Dimensions variable, Exhibition View, Spheres 2012, at GALLERIA CONTINUA, Le Moulin, Courtesy Zhanna Kadyrova and Izolyatsia. Platform for Cultural Initiatives



SPHÈRES 2012 - Zhanna Kadyrova, *'Filling In'*, 2012, Various kitchen and household enameled vessels, tiles, Dimensions variable, Exhibition View, Spheres 2012, at GALLERIA CONTINUA, Le Moulin, Courtesy Zhanna Kadyrova and Izolyatsia. Platform for Cultural Initiatives



SPHÈRES 2012 - Zhanna Kadyrova, *'Filling In'*, 2012, Various kitchen and household enameled vessels, tiles, Dimensions variable, Exhibition View, Spheres 2012, at GALLERIA CONTINUA, Le Moulin, Courtesy Zhanna Kadyrova and Izolyatsia. Platform for Cultural Initiatives



SPHÈRES 2012 - Zhanna Kadyrova, *'Banquet'*, 2012, Paper cups, tiles, Dimensions variable, Exhibition View, Spheres 2012, at GALLERIA CONTINUA, Le Moulin, Courtesy Zhanna Kadyrova and Izolyatsia. Platform for Cultural Initiatives



SPHÈRES 2012 - Zhanna Kadyrova, *'Filling In'*, 2012, Various kitchen and household enameled vessels, tiles, Dimensions variable, Exhibition View, Spheres 2012, at GALLERIA CONTINUA, Le Moulin, Courtesy Zhanna Kadyrova and Izolyatsia. Platform for Cultural Initiatives



SPHÈRES 2012 - Zhanna Kadyrova, *'Invisible Forms'*, 2012, Security camera, wooden beams, cement, Dimensions variable, Exhibition View, Spheres 2012, at GALLERIA CONTINUA, Le Moulin Courtesy Zhanna Kadyrova and Izolyatsia. Platform for Cultural Initiatives



SPHÈRES 2012 - Zhanna Kadyrova, *'Invisible Forms'*, 2012, Security camera, wooden beams, cement, Dimensions variable; and: Zhanna Kadyrova, *'Invisible Forms'*, 2012, Car, wooden beams, cement, Dimensions variable, Exhibition View, Spheres 2012, at GALLERIA CONTINUA, Le Moulin, Courtesy Zhanna Kadyrova and Izolyatsia. Platform for Cultural Initiatives



SPHÈRES 2012 - Zhanna Kadyrova, *'Invisible Forms'*, 2012, Car, wooden beams, cement, Dimensions variable, Exhibition View, Spheres 2012, at GALLERIA CONTINUA, Le Moulin, Courtesy Zhanna Kadyrova and Izolyatsia. Platform for Cultural Initiatives



SPHÈRES 2012 - Zhanna Kadyrova, *'Invisible Forms'*, 2012, Car, wooden beams, cement, Dimensions variable, Exhibition View, Spheres 2012, at GALLERIA CONTINUA, Le Moulin, Courtesy Zhanna Kadyrova and Izolyatsia. Platform for Cultural Initiatives



SPHÈRES 2012 - Zhanna Kadyrova, *'Diamonds'*, 2012, Tiles, cement, Dimensions variable, Exhibition View, Spheres 2012, at GALLERIA CONTINUA, Le Moulin, Courtesy Zhanna Kadyrova and Izolyatsia. Platform for Cultural Initiatives



SPHÈRES 2012 - Zhanna Kadyrova, *'Diamonds'*, 2012, Tiles, cement, Dimensions variable, Exhibition View, Spheres 2012, at GALLERIA CONTINUA, Le Moulin, Courtesy Zhanna Kadyrova and Izolyatsia. Platform for Cultural Initiatives



SPHÈRES 2012 - Zhanna Kadyrova, *'Diamonds'*, 2012, Tiles, cement, Dimensions variable, Exhibition View, Spheres 2012, at GALLERIA CONTINUA, Le Moulin, Courtesy Zhanna Kadyrova and Izolyatsia. Platform for Cultural Initiatives



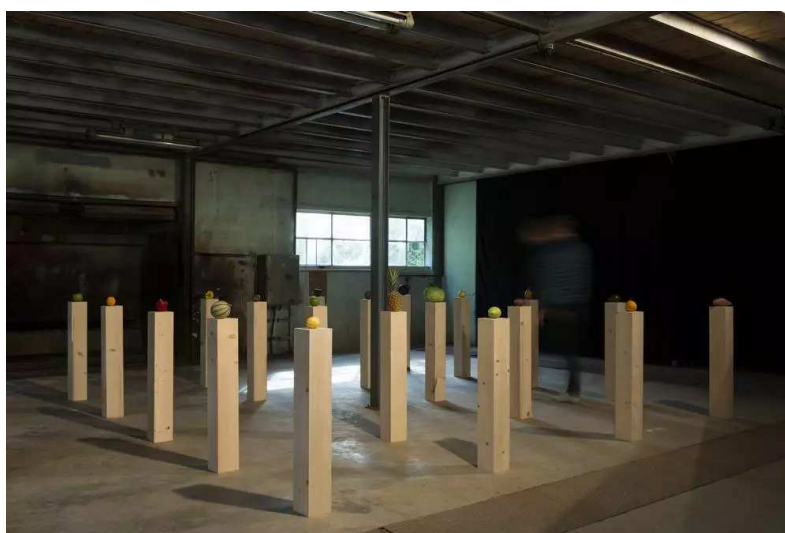
SPHÈRES 2012 - Sarah Braman, *'April Adventure'*, 2011, Mixed media, 265 x 180 x 192 cm, Exhibition View, Spheres 2012, at GALLERIA CONTINUA, Le Moulin, Courtesy Depart Foundation



SPHÈRES 2012 - Abdalnasser Gharem, '*Siraat (The Path)*', 2009, Video, 3'4", Exhibition View, Spheres 2012, at GALLERIA CONTINUA, Le Moulin, Courtesy of the artist and EOA Projects, co-production Dar al-Mamûn



SPHÈRES 2012 - Abdalnasser Gharem, '*Siraat (The Path)*', 2009, Video, 3'4", Exhibition View, Spheres 2012, at GALLERIA CONTINUA, Le Moulin, Courtesy of the artist and EOA Projects, co-production Dar al-Mamûn



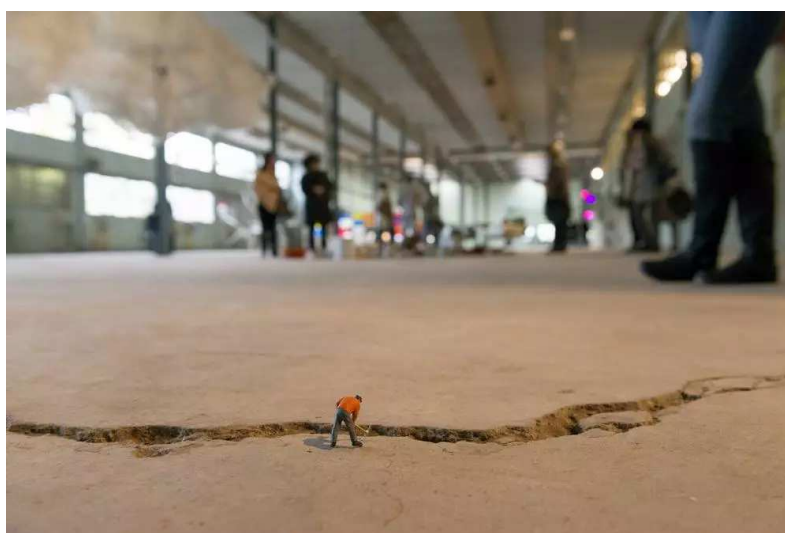
SPHÈRES 2012 - Darren Bader, '*Fruits, Vegetables*', 2011, Fruits and vegetables salad, Dimensions variable, Exhibition View, Spheres 2012, at GALLERIA CONTINUA, Le Moulin, Courtesy Depart Foundation



SPHÈRES 2012 - Liliana Porter, *'To clean up'*, 2012, Site specific installation, Figurine placed on the floor « sweeping » a line of red sand, Exhibition View, Spheres 2012, at GALLERIA CONTINUA, Le Moulin, Courtesy Galerie Mor.Charpentier



SPHÈRES 2012 - Liliana Porter, *'To clean up'*, 2012, Site specific installation, Figurine placed on the floor « sweeping » a line of red sand, Exhibition View, Spheres 2012, at GALLERIA CONTINUA, Le Moulin, Courtesy Galerie Mor.Charpentier



SPHÈRES 2012 - Liliana Porter, *'Man with Axe'*, 2012, Site specific installation, Figurine placed on the cement floor with a long crack, Exhibition View, Spheres 2012, at GALLERIA CONTINUA, Le Moulin, Courtesy Galerie Mor.Charpentier



SPHÈRES 2012 - Liliana Porter, *'Man with Axe'*, 2012, Site specific installation, Figurine placed on the cement floor with a long crack, Exhibition View, Spheres 2012, at GALLERIA CONTINUA, Le Moulin, Courtesy Galerie Mor.Charpentier



SPHÈRES 2012 - Liliana Porter, *'To fix it'*, 2012, Site specific installation, Figurine placed on top of existing machines, Exhibition View, Spheres 2012, at GALLERIA CONTINUA, Le Moulin, Courtesy Galerie Mor.Charpentier



SPHÈRES 2012 - Liliana Porter, *'To fix it'*, 2012, Site specific installation, Figurine placed on top of existing machines, Exhibition View, Spheres 2012, at GALLERIA CONTINUA, Le Moulin, Courtesy Galerie Mor.Charpentier



SPHÈRES 2012 - Liliana Porter, *To fix it'* 2012, Site specific installation, Figurine placed on top of existing machines, Exhibition View, Spheres 2012, at GALLERIA CONTINUA, Le Moulin, Courtesy Galerie Mor.Charpentier



SPHÈRES 2012 - Liliana Porter, *The Anarchist'*, 2012, Site specific installation, Figurine and yarn, Exhibition View, Spheres 2012, at GALLERIA CONTINUA, Le Moulin, Courtesy Galerie Mor.Charpentier



SPHÈRES 2012 - Liliana Porter, *The Anarchist'*, 2012, Site specific installation, Figurine and yarn, Exhibition View, Spheres 2012, at GALLERIA CONTINUA, Le Moulin, Courtesy Galerie Mor.Charpentier



SPHÈRES 2012 - Liliana Porter, *'The Anarchist'*, 2012, Site specific installation, Figurine and yarn, Exhibition View, Spheres 2012, at GALLERIA CONTINUA, Le Moulin, Courtesy Galerie Mor.Charpentier



SPHÈRES 2012 - Liliana Porter, *'The Anarchist'*, 2012, Site specific installation, Figurine and yarn, Exhibition View, Spheres 2012, at GALLERIA CONTINUA, Le Moulin, Courtesy Galerie Mor.Charpentier



SPHÈRES 2012 - Yann Gerstberger, *'Lentali Lightning Bolt'*, 2012 - *'Double Pussy Cosmic'*, 2012 - *'Ox The'*, 2012, mops, linoleum, contact cement, natural pigments, 300 x 250 cm each, Exhibition View, Spheres 2012, at GALLERIA CONTINUA, Le Moulin, Courtesy of the artist, co-production Dar al-Mamûn



SPHÈRES 2012 - Nikhil Chopra, *'inside out'*, 2012, digital print on Archival Paper, Photography by Shivani Gupta, Costume Design by Sabine Pfisterer, 202,5 x 135,6 cm (unframed) each, Courtesy GALLERIA CONTINUA, San Gimignano, Beijing, Le Moulin



SPHÈRES 2012 - Nikhil Chopra, *'inside out'*, 2012, digital print on Archival Paper, Photography by Shivani Gupta, Costume Design by Sabine Pfisterer, 202,5 x 135,6 cm (unframed) each, Courtesy GALLERIA CONTINUA, San Gimignano, Beijing, Le Moulin



SPHÈRES 2012 - Kendell Geers, *'Flesh of the Shadow Spirits 52'*, 2011, Resin, 200 x 41 x 44 cm, Courtesy GALLERIA CONTINUA, San Gimignano, Beijing, Le Moulin



SPHÈRES 2012 - Nicolas Moulin, *'Wenludewind 4'*; 2009 - *'Wenludewind 7'*; 2009, Photomontages from B&W photos, diasec and antireflective prints, 70 x 210 cm each, Exhibition View, Spheres 2012, at GALLERIA CONTINUA, Le Moulin, Courtesy Galerie Chez Valentin, Nicolas Moulin in residence in Dar al-Mamûn, Marrakech, in 2011



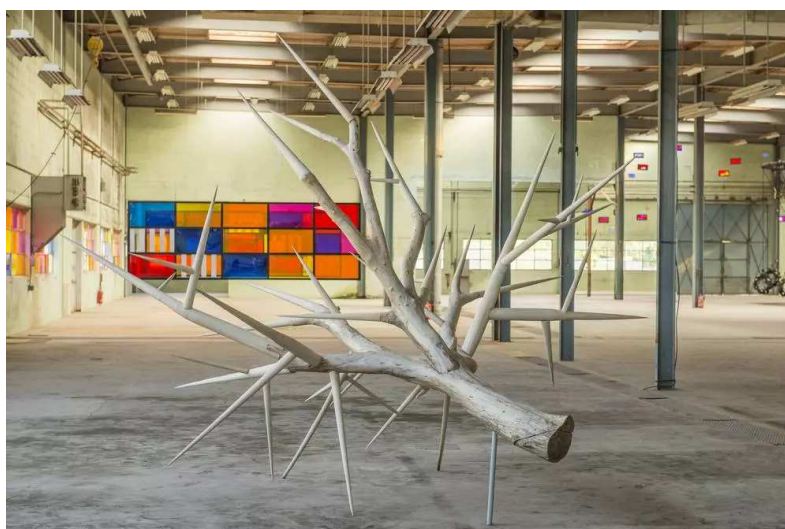
SPHÈRES 2012 - Amy Croft, *'grey sky blue'*; 2012, Video installation, 20 min, Exhibition View, Spheres 2012, at GALLERIA CONTINUA, Le Moulin, Courtesy of the artist, co-production Dar al-Mamûn



SPHÈRES 2012 - Amy Croft, *'grey sky blue'*; 2012, Video installation, 20 min, Exhibition View, Spheres 2012, at GALLERIA CONTINUA, Le Moulin, Courtesy of the artist, co-production Dar al-Mamûn



SPHÈRES 2012 - Julia Cottin, '*Akantha (L'Épine blanche)*', 2012, Walnut tree wood, ash, 350 x 450 x 300 cm, Exhibition View, Spheres 2012, at GALLERIA CONTINUA, Le Moulin, Courtesy of the artist, co-production Galerie Eva Hober, Julia Cottin in residence in Dar al-Maḥmūn, Marrakech, in 2011



SPHÈRES 2012 - Julia Cottin, '*Akantha (L'Épine blanche)*', 2012, Walnut tree wood, ash, 350 x 450 x 300 cm, Exhibition View, Spheres 2012, at GALLERIA CONTINUA, Le Moulin, Courtesy of the artist, co-production Galerie Eva Hober, Julia Cottin in residence in Dar al-Maḥmūn, Marrakech, in 2011; and: Daniel Buren, '*En Enfilade*', 2007, Photo-souvenir: 'En Enfilade', travail in situ, Galleria Continua, Le Moulin, Boissy-le-Châtel, octobre 2007, Dimensions variable, Sticky Vinyl, Plexiglas, color, Courtesy GALLERIA CONTINUA, San Gimignano, Beijing, Le Moulin



SPHÈRES 2012 - Megumi Matsubara, '*A room for the colour blind*', 2012, Site specific installation, Mixed media, Dimensions variable, Exhibition View, Spheres 2012, at GALLERIA CONTINUA, Le Moulin, Courtesy of the artist, Megumi Matsubara in residence in Dar al-Maḥmūn, Marrakech, in 2012, Supported by Institut Francais de Fès and Pola Art Foundation



SPHÈRES 2012 - Megumi Matsubara, *'A room for the colour blind'*, 2012, Site specific installation, Mixed media, Dimensions variable, Exhibition View, Spheres 2012, at GALLERIA CONTINUA, Le Moulin, Courtesy of the artist, Megumi Matsubara in residence in Dar al-Maمmûn, Marrakech, in 2012, Supported by Institut Francais de Fès and Pola Art Foundation



SPHÈRES 2012 - Megumi Matsubara, *'A room for the colour blind'*, 2012, Site specific installation, Mixed media, Dimensions variable, Exhibition View, Spheres 2012, at GALLERIA CONTINUA, Le Moulin, Courtesy of the artist, Megumi Matsubara in residence in Dar al-Maمmûn, Marrakech, in 2012, Supported by Institut Francais de Fès and Pola Art Foundation



SPHÈRES 2012 - Megumi Matsubara, *'A proposal for a text book to learn Braille, English and other languages'*, 2012, Lambda c-prints, ink on papier, 62 x 50 cm each, Exhibition View, Spheres 2012, at GALLERIA CONTINUA, Le Moulin, Courtesy of the artist, co-production Dar al-Mamûn



SPHÈRES 2012 - Slinko, *'Free Market'*, 2012, Public performance, Marrakech, Morocco, Screen, DVD player, 103 x 65 cm, Exhibition View, Spheres 2012, at GALLERIA CONTINUA, Le Moulin, Courtesy of the artist, co-production Dar al-Mamûn



SPHÈRES 2012 - Sterling Ruby, *'Supermax Wall'*, 2006, Acrylic glass, wood, lacquer and spray paint, 253 x 526 x 122 cm, Exhibition View, Spheres 2012, at GALLERIA CONTINUA, Le Moulin, Courtesy Depart Foundation



SPHÈRES 2012 - Sterling Ruby, *'Supermax Wall'*, 2006, Acrylic glass, wood, lacquer and spray paint, 253 x 526 x 122 cm, Exhibition View, Spheres 2012, at GALLERIA CONTINUA, Le Moulin, Courtesy Depart Foundation



SPHÈRES 2012 - Sterling Ruby, *'Supermax Wall'*; 2006, Acrylic glass, wood, lacquer and spray paint, 253 x 526 x 122 cm, Exhibition View, Spheres 2012, at GALLERIA CONTINUA, Le Moulin, Courtesy Depart Foundation



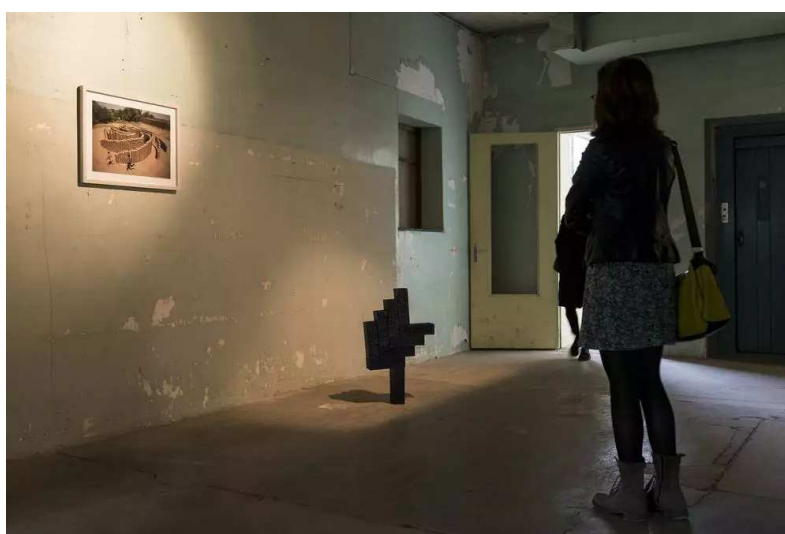
SPHÈRES 2012 - Yoshua Okon, *'Coyoteria'*; 2003, Video installation, LCD screen and performance relics, Exhibition View, Spheres 2012, at GALLERIA CONTINUA, Le Moulin, Courtesy Galerie Mor.Charpentier



SPHÈRES 2012 - Jorge Pedro Nunez, *'Modelo constructivo'*; 2012, Steel plate and wall drawing, Dimensions variable (plate 125 x 250 cm), Exhibition View, Spheres 2012, at GALLERIA CONTINUA, Le Moulin, Courtesy Galerie Crèvecoeur, Jorge Pedro Nunez in residence in Dar al-Ma'mûn, Marrakech, in 2010



SPHÈRES 2012 - Elin Hansdottir, *'Mud Brick Spiral'*, 2012, Photography, 50 x 98 cm, Exhibition View, Spheres 2012, at GALLERIA CONTINUA, Le Moulin, Courtesy I8 Gallery, co-production Dar al-Mamûn; and: Elin Handottir, *'Fierce Urgency of Now'*, 2012, 9 balancing bricks, resin, sugar, ultramarine pigment, Dimensions variable, Exhibition View, Spheres 2012, at GALLERIA CONTINUA, Le Moulin, Courtesy © I8 Gallery, Elin Hansdottir in residence in Dar al-Maḥmûn, Marrakech, in 2011



SPHÈRES 2012 - Elin Hansdottir, *'Mud Brick Spiral'*, 2012, Photography, 50 x 98 cm, Exhibition View, Spheres 2012, at GALLERIA CONTINUA, Le Moulin, Courtesy I8 Gallery, co-production Dar al-Mamûn; and: Elin Hansdottir, *'Fierce Urgency of Now'*, 2012, 9 balancing bricks, resin, sugar, ultramarine pigment, Dimensions variable, Exhibition View, Spheres 2012, at GALLERIA CONTINUA, Le Moulin, Courtesy © I8 Gallery, Elin Hansdottir in residence in Dar al-Maḥmûn, Marrakech, in 2011



SPHÈRES 2012 - Loris Cecchini, *'Rainbow trusses (wildboxie rosmarinho)'*, 2010, UV protected polycarbonate, Optical Lighting Film, steel, bronze casting, 80 x 140 x 50 cm; and: Loris Cecchini, *'Rainbow trusses (Studio suggestions creatures III)'*, 2010, UV protected polycarbonate, Optical Lighting Film, boxes in thermoformed PETG, steel, 190 x 127 x 38 cm, Courtesy GALLERIA CONTINUA, San Gimignano, Beijing, Le Moulin



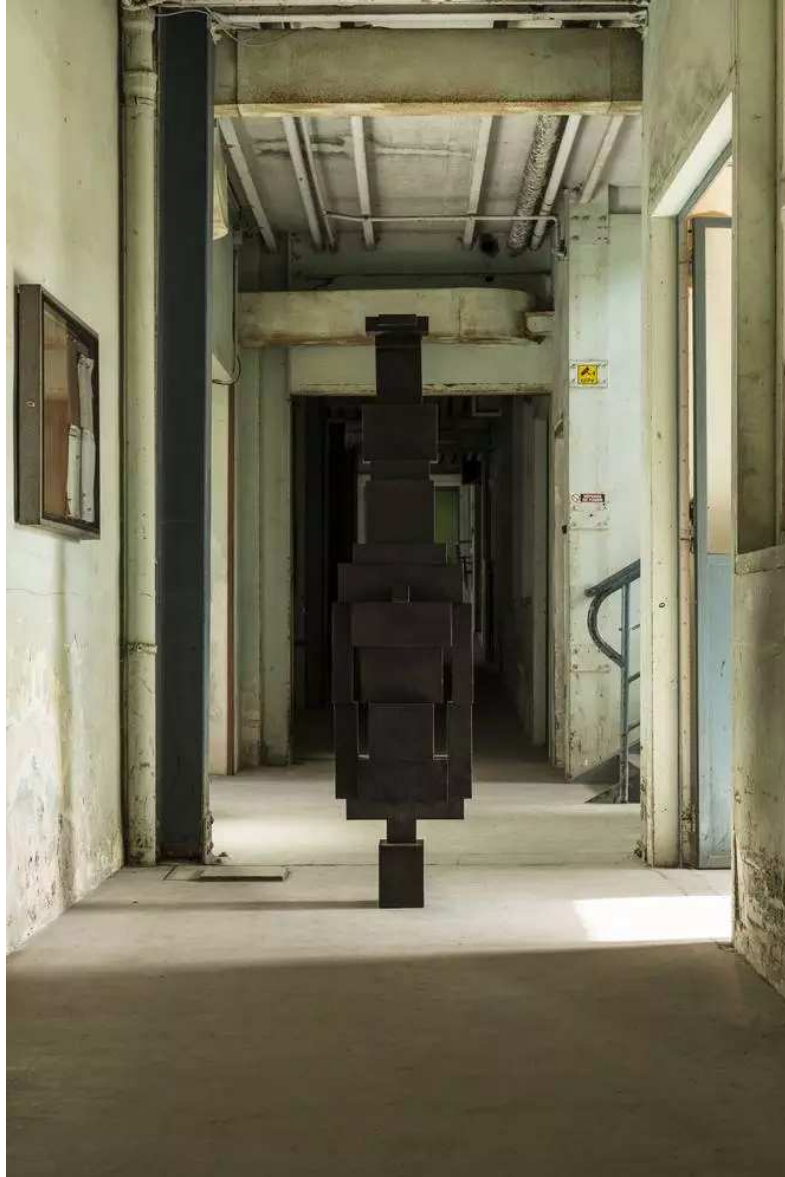
SPHÈRES 2012 - Rob Pruitt, *'Kill Me'*; 2012, Acrylic, enamel paint and flocking on canvas, 267 x 211 cm, Exhibition View, Spheres 2012, at GALLERIA CONTINUA, Le Moulin, Courtesy Depart Foundation; and: Meschac Gaba, *'Zacharias Janssen'*, 2011, Braided artificial hair, 70 x 28 x 40 cm, Courtesy GALLERIA CONTINUA, San Gimignano, Beijing, Le Moulin



SPHÈRES 2012 - Mohamed Namou, *'Esprit ◊ Matière ◊ Esprit'*, 2009, Blue granite block and blue silk ribbon, Dimensions variable; and: Mohamed Namou, *'Esprit ◊ Matière ◊ Esprit'*, 2009, Wood and yellow silk ribbon, Dimensions variable; and: Mohamed Namou, *'Esprit ◊ Matière ◊ Esprit'*, 2009, Wood, marble inlay, red silk ribbon, Dimensions variable, Exhibition View, Spheres 2012, at GALLERIA CONTINUA, Le Moulin, Courtesy Galerie Mor.Charpentier



SPHÈRES 2012 - Mohamed Namou, *'Esprit ◊ Matière ◊ Esprit'*, 2009, Wood and yellow silk ribbon, Dimensions variable; and: Mohamed Namou, *'Esprit ◊ Matière ◊ Esprit'*, 2009, Blue granite block and blue silk ribbon, Dimensions variable, Exhibition View, Spheres 2012, at GALLERIA CONTINUA, Le Moulin, Courtesy Galerie Mor.Charpentier



SPHÈRES 2012 - Antony Gormley, *'Pole II'*, 2012, Cast iron, 194 x 46 x 32 cm, Courtesy GALLERIA CONTINUA, San Gimignano, Beijing, Le Moulin



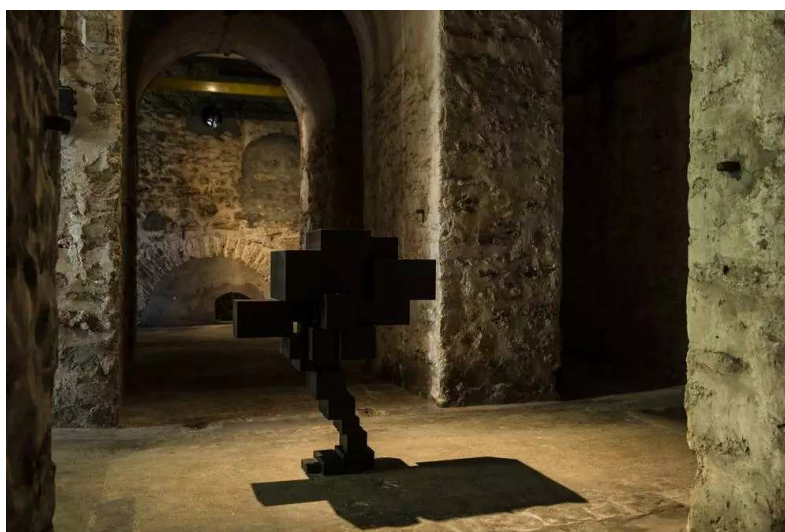
SPHÈRES 2012 - Antony Gormley, *'Corner'*, 2011, Cast iron, 79 x 45 x 65 cm, Courtesy GALLERIA CONTINUA, San Gimignano, Beijing, Le Moulin



SPHÈRES 2012 - Antony Gormley, *'Corner'*, 2011, Cast iron, 79 x 45 x 65 cm, Courtesy GALLERIA CONTINUA, San Gimignano, Beijing, Le Moulin



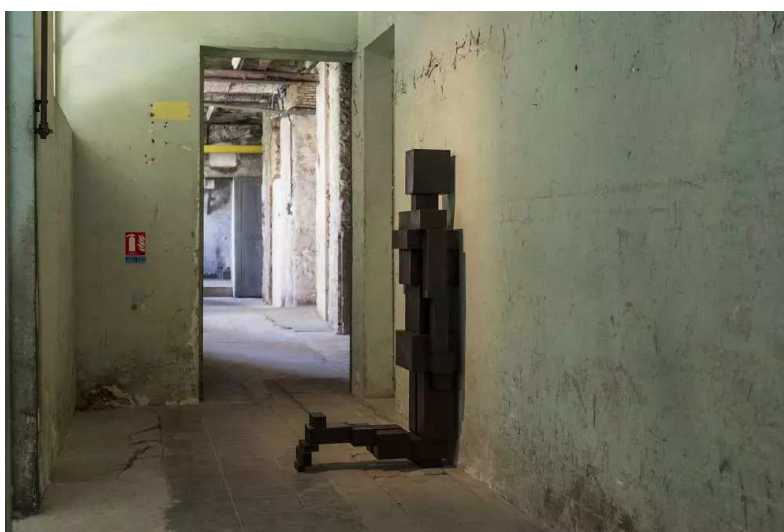
SPHÈRES 2012 - Antony Gormley, '*Subject*', 2012, Cast iron, 142 x 44 x 71 cm, Courtesy GALLERIA CONTINUA, San Gimignano, Beijing, Le Moulin



SPHÈRES 2012 - Antony Gormley, '*Cutch IX*', 2011, Cast iron, 91 x 44 x 73 cm, Courtesy GALLERIA CONTINUA, San Gimignano, Beijing, Le Moulin



SPHÈRES 2012 - Antony Gormley, *'Clutch IX'*, 2011, Cast iron, 91 x 44 x 73 cm, Courtesy GALLERIA CONTINUA, San Gimignano, Beijing , Le Moulin



SPHÈRES 2012 - Antony Gormley, *'Subject'*, 2012, Cast iron, 142 x 44 x 71 cm, Courtesy GALLERIA CONTINUA, San Gimignano, Beijing, Le Moulin



SPHÈRES 2012 - Oscar Munoz, *'Ciclope'*, 2012, Sound, mono-chaine, 2,35 : 1 HD, 12 minutes loop, Exhibition View, Spheres 2012, at GALLERIA CONTINUA, Le Moulin, Courtesy Galerie Mor.Carpentier



SPHÈRES 2012 - Oscar Munoz, *'Ciclope'*, 2012, Sound, mono-chaine, 2,35 : 1 HD, 12 minutes loop, Exhibition View, Spheres 2012, at GALLERIA CONTINUA, Le Moulin, Courtesy Galerie Mor.Charpentier



SPHÈRES 2012 - Voluspa Jarpa, *'Surface Tension'*, 2012, Volume made out of silicon-coated thread of 56 m and 30 000 printed figures of women having hysteria attacks, Dimensions variable, Exhibition View, Spheres 2012, at GALLERIA CONTINUA, Le Moulin, Courtesy Galerie Mor.Charpentier



SPHÈRES 2012 - Voluspa Jarpa, *'Surface Tension'*, 2012, Volume made out of silicon-coated thread of 56 m and 30 000 printed figures of women having hysteria attacks, Dimensions variable, Exhibition View, Spheres 2012, at GALLERIA CONTINUA, Le Moulin, Courtesy Galerie Mor.Charpentier



SPHÈRES 2012 - Voluspa Jarpa, *'Surface Tension'* 2012, Volume made out of silicon-coated thread of 56 m and 30 000 printed figures of women having hysteria attacks, Dimensions variable, Exhibition View, Spheres 2012, at GALLERIA CONTINUA, Le Moulin, Courtesy Galerie Mor.CharpentierVOLUSPA JARPA - *'Surface Tension'* 2012, Volume made out of silicon-coated thread of 56 m and 30 000 printed figures of women having hysteria attacks, Dimensions variable, Exhibition View, Spheres 2012, at GALLERIA CONTINUA / Le Moulin, Courtesy Galerie Mor.Charpentier



SPHÈRES 2012 - Meschac Gaba, *'Jerome Rhodes'* 2011, Braided artificial hair, 39 x 47 x 29 cm, Courtesy GALLERIA CONTINUA, San Gimignano, Beijing, Le Moulin



SPHÈRES 2012 - Meschac Gaba, *'Jerome Rhodes'*, 2011, Braided artificial hair, 39 x 47 x 29 cm, Courtesy GALLERIA CONTINUA, San Gimignano, Beijing, Le Moulin



SPHÈRES 2012 - Pascale Marthine Tayou, *'Playboys'*, 2010, Colonial figures, pool table, Courtesy GALLERIA CONTINUA, San Gimignano, Beijing, Le Moulin; and : Eko Nugroho, *'Global Identity'*, 2011, Acrylic on canvas, 195 x 130 cm, Exhibition View, Spheres 2012, at GALLERIA CONTINUA, Le Moulin, Courtesy Sandra and Amaury Mulliez ➤ SAM Art Projects



SPHÈRES 2012 - Eko Nugroho, *'La rue parle n°1'*, 2011, 34 embroideries, 40 x 35 cm each, Exhibition View, Spheres 2012, at GALLERIA CONTINUA, Le Moulin, Courtesy Sandra and Amaury Mulliez, SAM Art Projects



SPHÈRES 2012 - Eko Nugroho, *'Global Identity'*, 2011, Acrylic on canvas, 195 x 130 cm, Exhibition View, Spheres 2012, at GALLERIA CONTINUA, Le Moulin, Courtesy Sandra and Amaury Mulliez, SAM Art Projects

